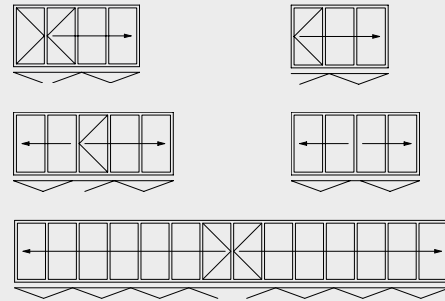


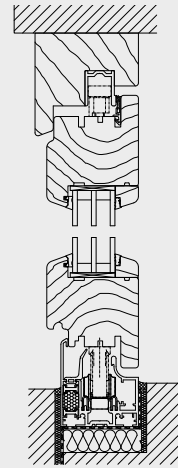
EXAMPLES OF FLOOR TRACK DETAIL



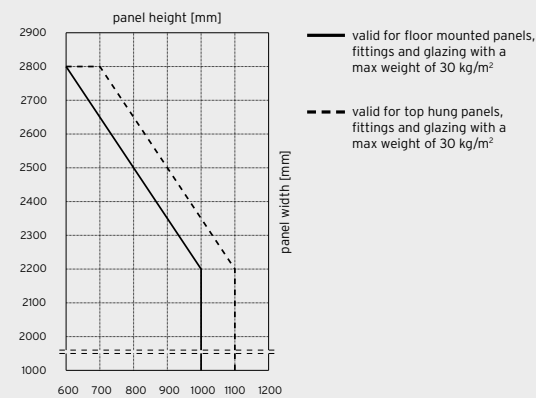
CONFIGURATION VARIANTS



VERTICAL SECTION



PANEL SIZE CHART



VARIANTS

- ▮ Floor mounted or top hung folding glass door
- ▮ Can be folded outward, inward, to the left or to the right - as required

PROFILE SYSTEM

- ▮ Laminated timber profiles
- ▮ 78 mm panel thickness
- ▮ Panel frame with solid mortice and tenon joints
- ▮ Standard timber: Pine, other type of timber optional
- ▮ Flush floor track without upstand for unimpeded access available
- ▮ Double wraparound seal with an additional seal in the panel joint ensure high impermeability to rain and wind
- ▮ Manufactured from a renewable source of timber

FITTINGS

- ▮ No protruding runner and guide tracks
- ▮ Concealed fittings for one handed operation
- ▮ Lockable in any partly open position

GLAZING

- ▮ Triple-glazing available
- ▮ Glazing with thermally insulated glass
- ▮ Glass thickness up to 36 mm
- ▮ $U_g = 0,7 \text{ W/m}^2\text{K}$ with 3 x 4 mm float glass and warm edge spacer

FINISH

- ▮ Primed according to SL colour chart as standard
- ▮ Finish according to SL colour chart optional
- ▮ Water-based lacquer

U-VALUE

- ▮ $U_w = 1,1 \text{ W/m}^2\text{K}$ to DIN EN ISO 10077-1:2006-12 on the basis of a three panel folding glass door, W x H 2700 mm x 2300 mm

MAXIMUM PANEL SIZES

- ▮ 1100 x 2200 mm
- ▮ 600 x 2800 mm
- ▮ Panel weight up to 70 kg
- ▮ Total element width 14 m
- ▮ Special sizes on request



567521064-900 | 02.2010 | Subject to technical changes



FOLDING GLASS DOOR
SL 78





HEIGHT ADJUSTMENT

Once in situ, the folding glass door can easily be adjusted for height by about 6 mm - which is important if settling of the building occurs.



SAFE OPERATION

The entry/exit panel can be secured in the open position by means of a special catch which keeps the panel secure when the facade is moved.



COMFORT

The integrated multi-point locking system and the comfortable stainless steel lever handle with catch bolt, lock and profile cylinder ensure high security.



HEAT INSULATION

Laminated timber and triple heat-insulating glass offer the maximum heat insulation in accordance with the best energy conservation regulations (EnEV).



FURNITURE

Solid flat stainless steel handles allow a compact panel stack when the folding glass door is open. Concealed fittings for one hand operation.



IMPERMEABILITY

Double wraparound seal with an additional seal in the panel joint ensure high impermeability to rain and wind.



WIDTH ADJUSTMENT

The overall width of the panels can be easily adjusted by adapting the hinges with a screwdriver.



STABILITY

The 78mm laminated timber profiles and espagnolettes, with 24mm throw bolts, lock the panels into both the top and bottom tracks of the frame, maintaining the integrity of the system as well as providing high security.

